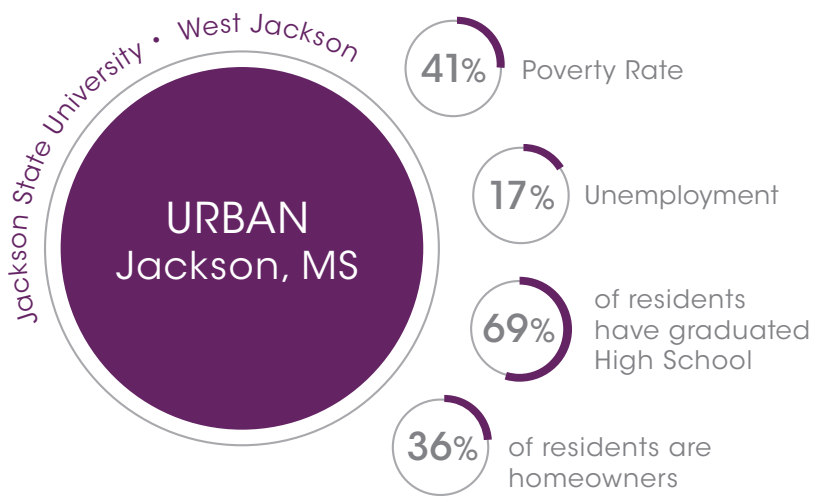


HBCU-CDFI

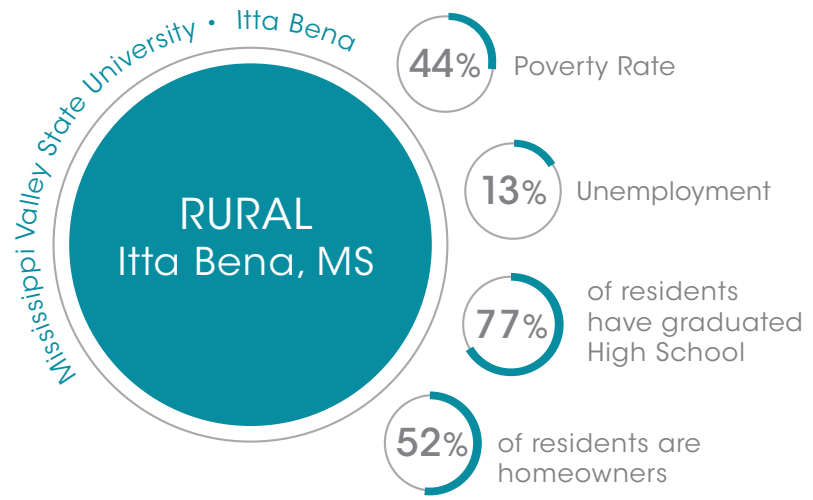
ECONOMIC MOBILITY GUIDE

2 HBCUs • 2 Communities

How can the strengths, assets, and durability of HBCUs and CDFIs be used to catalyze community development and upward economic mobility within surrounding communities of color?



How can the assets and resources of surrounding communities be developed to support HBCUs and their stakeholders?





RESEARCH, ANALYSIS, & DESIGN PLANNING

We analyzed the assets and liabilities of the communities and campuses to identify the most strategic interventions that could positively impact the economy and lives of all stakeholders. This analysis allowed us to ground our work in the placed-based economic mobility and anchor inclusion frameworks of:

- Shared Value
- Community Wealth Building



COMMUNITY BUILDING

We listened to the residents and stakeholders to determine assets and liabilities, critical needs and deficiencies, potential opportunities, and overlapping goals. The community building activities included:

- Surveys
- Focus Groups
- Investments in community projects and infrastructure
- Capacity Building
- Community Leadership Development



COMMUNITY DEVELOPMENT

We reviewed findings from research and analysis, previous plans and community building activities to develop strategic priorities. Once identified, we engaged the community to assure alignment with the local needs and desires. The Economic Mobility guide includes specific project recommendations along and potential funding sources for the following community development areas:

- Affordable Housing
- Education
- Health & Fresh Food Access
- Business Development
- Historic Preservation
- Clean Energy

LESSONS LEARNED & RESOURCES FOR REPLICATION

We unearthed a number of lessons for both CDFIs and HBCUs who are considering reinvestment collaborations in the future. These lessons, combined with our cache of resources listed below, can be used to replicate this model in other HBCU communities across the country.

MEETING
AGENDAS

PROJECT
SCHEDULES

RFPS
AND
MOUS

SURVEY
TEMPLATES

BUDGET



MISSISSIPPI VALLEY STATE
UNIVERSITY